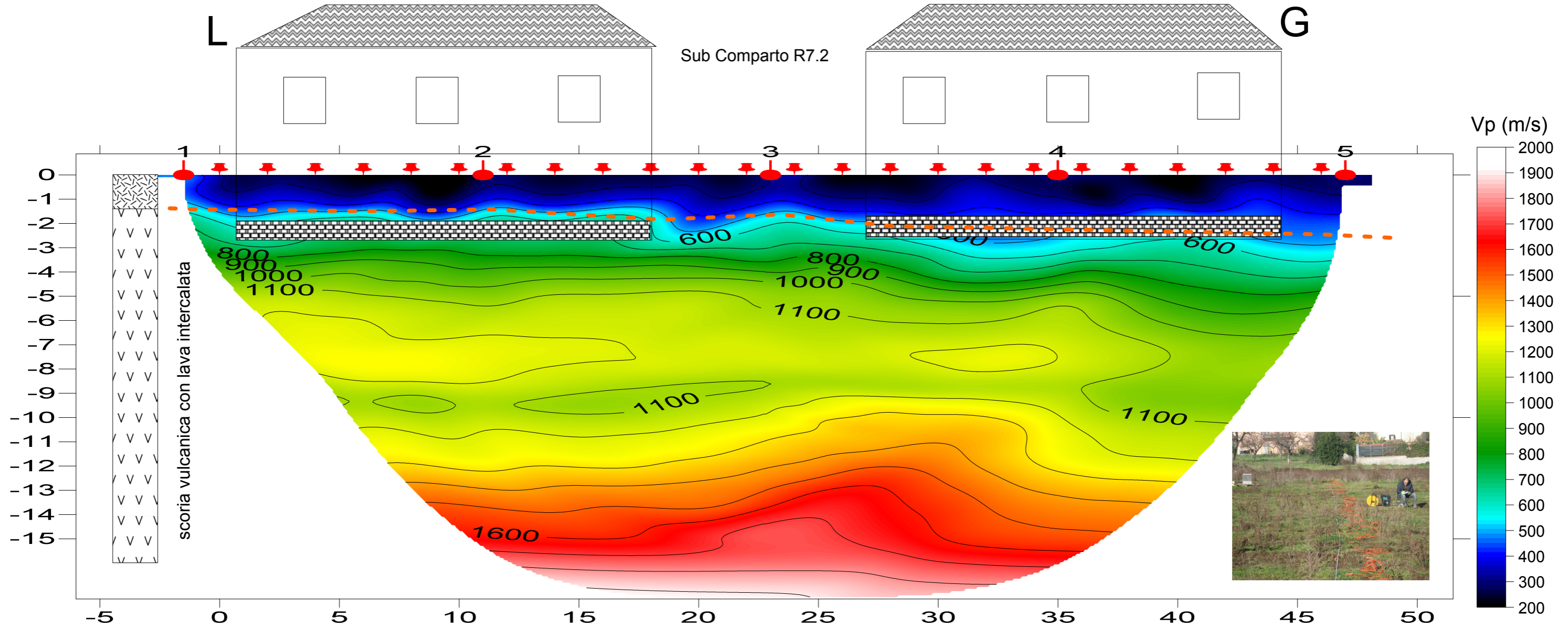


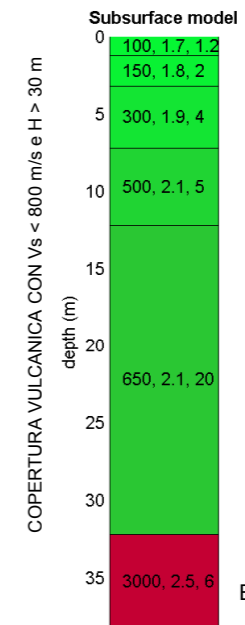
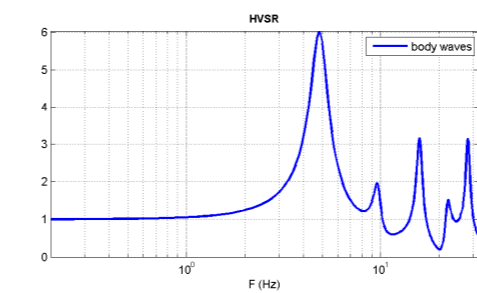
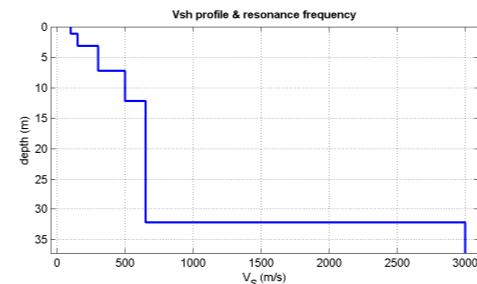
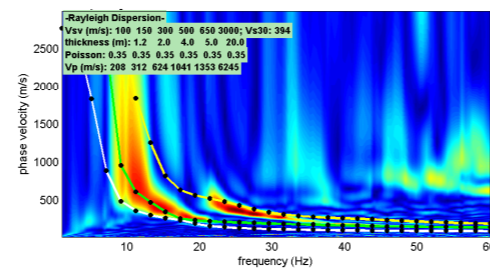
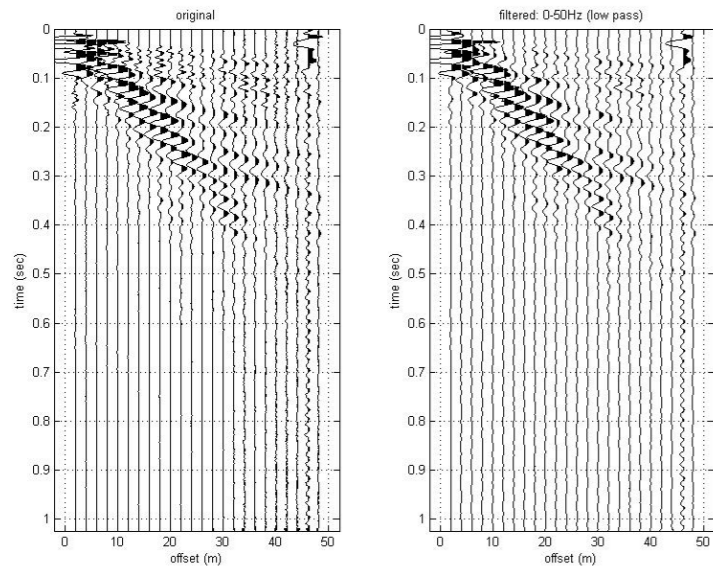
# MODELLO GEOFISICO



TOMOGRFIA SISMICIA SEID1, 10 WET iterations, RMS error 2.5 %, 1D-Gradient smooth initial model, Version 3.17

## MASW - Modellazione diretta

[www.winmasw.com](http://www.winmasw.com)



Vs30 (m/s): 394

C Depositi di terreni a grana grossa mediamente addensati o terreni a grana fina mediamente consistenti con spessori superiori a 30 m, caratterizzati da un graduale miglioramento delle proprietà meccaniche con la profondità e da valori di  $V_{s30}$  compresi tra 180 m/s e 360 m/s (ovvero  $15 < N_{SP1,30} < 50$  nei terreni a grana grossa e  $70 < c_{v,30} < 250$  kPa nei terreni a grana fina).

Vs density thickness  
(m/s) (g/cm<sup>3</sup>) (m)